

IEC Appliance Inlet C16A, Snap-in Mounting, Front Side, Quick-connect or Screw-on Terminal



Snap-In Version



155° C

**Description**

- Panel Mount:  
Snap-in version, Frontside
- 1 Function:

- Appliance Inlet, Pin temperature 155 °C, Protection class I

**Approvals**

- VDE Certificate Number: 40009510
- UL File Number: E96454
- CSA File Number: 27324

**References**

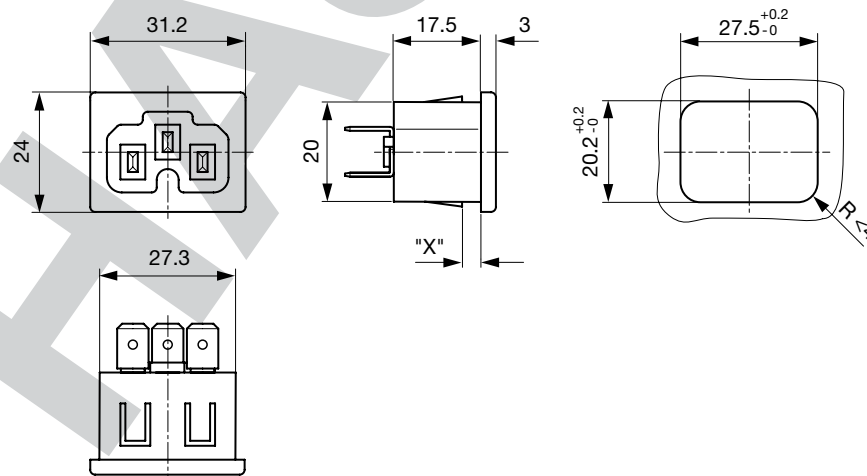
We recommend for new applications the type 6120-5  
Last order possibility: 31.05.2011

**Weblinks**

[pdf-datasheet](#), [html-datasheet](#), [General Product Information](#), [Approvals](#), [CE declaration of conformity](#), [RoHS](#), [CHINA-RoHS](#), [Mating Connectors](#), [e-Shop](#), [SCHURTER-Stock-Check](#), [Distributor-Stock-Check](#), [CAD-Drawings](#), [Accessories](#), [Mounting instruction](#), [Detailed request for product](#)

**Technical Data**

Ratings IEC	10A / 250VAC; 50Hz	Appliance Inlet	C16A acc. to IEC 60320
Ratings UL/CSA	15A / 250VAC; 60Hz		UL 498, CSA C22.2 no. 42 (for hot conditions) pin-temperature 155 °C, 10A, Protection Class I
Dielectric Strength	> 3kVAC between L-N > 1.5kVAC between L/N-PE (1 min/50Hz)		
Allowable Operation Temp.	-25 °C to 155 °C		
Degree of Protection	from front side IP 20 acc. to IEC 60529		
Protection Class	Suitable for appliances with protection class I acc. to IEC 61140		
Panel Thickness s	Snap-in version 1/1.2/1.5/2.0/2.5/2.7/3.0/4.0 mm		
Material: Housing	PBT, black or grey		

**Dimensions**

Length of the terminal please find at the order code configuration table  
Dimension "X" please ref. to table order code

## Config. Code

0184 - H - A B C 0 - D - E G

The characters are placeholders for the correspondingly keys of selections from the key tables.

0184 - H - A B C 0 - D - E G = Type

Type	Configuration key
protection class 1	X

0184 - H - A B C 0 - D - E G = Terminals

Terminal L	Configuration key
Blade terminal (4.8 x 0.8 mm) 	8
Blade terminal (6.3 x 0.8 mm) 	9
screw terminal	A

0184 - H - A B C 0 - D - E G = Terminals

Terminal N	Configuration key
Blade terminal (4.8 x 0.8 mm)	8
Blade terminal (6.3 x 0.8 mm)	9
screw terminal	A

Symbols similar as in table A

0184 - H - A B C 0 - D - E G = Terminals

Terminal Ground	Configuration key
Blade terminal (4.8 x 0.8 mm)	8
Blade terminal (6.3 x 0.8 mm)	9
screw terminal	A

Symbols similar as in table A

**Packaging unit** 50 Pcs

## Mating Outlets/Connectors

Category / Description



[Connector Overview complete](#)

IEC Connector C15A, Rewireable, Straight	0102
IEC Connector C15A, Rewireable, Straight	0102-G
IEC Connector C15A, Rewireable, Angled	0112

[Connector further types to 0184](#)

0184 - H - A B C 0 - D - E G = Color

Color	Configuration key
Black	A
Grey	C

0184 - H - A B C 0 - D - E G = Style

Style	Configuration key
snap-in (x=panel thickness)	4

0184 - H - A B C 0 - D - E G = Dimension X

Dimension "X"	Configuration key
15	
20	
25	
30	
40	

The dimension "X" is displayed in ( $\frac{1}{10}$  mm). This information is also valid for the order code