

IEC Appliance Inlet C14 or C18 with Filter, high attenuation, Screw-on mounting



Protection class I
black

Protection class II
white



See below:
[Approvals and Compliances](#)

Description

- Compact IEC C14 oder C18 Appliance Inlet with Filter
- Screw-on from front side
- Appliance Inlet protection class I or II
- Line filter in standard and medical version
- Available in black and white

Unique Selling Proposition

- With sealing: IP54 under load, IP67 towards housing
- Protection class II qualified for medical applications 2 MOPP
- High performance filter versions
- V-Lock cord retaining

Characteristics

- Compact filter with high attenuation
- Optimal shielding due to completely closed filter case, unpotted
- Ideal for application with high disturbance level
- Suitable for applications according IEC/UL 62368-1
- Suitable for use in medical equipment according to IEC/UL 60601-1 (1 MOOP, 1 MOPP)

Other versions on request

- Variants without sealing
- Class X1- and Y1-capacitors for enhanced withstand voltage
- Filter version with high inductance
- Variant with metal flange for front or rear mounting

Weblinks

[pdf data sheet](#), [html datasheet](#), [General Product Information](#), [Approvals](#), [Distributor-Stock-Check](#), [Accessories](#), [Detailed request for product](#)

Technical Data

Ratings IEC	1 - 10A @ Ta 40 °C / 250VAC; 50Hz
Ratings UL/CSA	1 - 15A @ Ta 40 °C / 250VAC; 60Hz
Leakage Current	standard < 0.5mA (250 V / 60 Hz) medical (M5) < 5 µA (250 V / 60 Hz) medical (M80) < 80 µA (250 V / 60 Hz)
Dielectric Strength	> 1.7 kVDC between L-N > 2.7 kVDC between L/N-PE Test voltage (2 sec) > 5.66 kVDC Protection class II between L/N-metal housing
Allowable Operation Temperature	-25 °C to 85 °C
Climatic Category	25/085/21 acc. to IEC 60068-1
IP-Protection	front side With sealing IP54 / IP67 acc. to IEC 60529
Protection Class	Suitable for appliances with protection class I or II acc. to IEC 61140
Terminal	Quick connect terminals 6.3 x 0.8 mm
Panel Thickness S	Screw: max 8 mm Mounting screw torque max 0.5 Nm
Material	Thermoplast / steel tin-plated, black / white, UL 94V-0

Appliance inlet/-outlet	C14 / C18 acc. to IEC 60320-1, UL 498, CSA C22.2 no. 42 (for cold conditions) pin-temperature 70 °C, 10A, Protection Class I or II
Line Filter	Standard and Medical Version, IEC 60939, UL 60939-3, CSA C22.2 no. 8 Technical Details
MTBF	> 3'000'000 h acc. to MIL-HB-217 F

Approvals and Compliances




Detailed information on product approvals, code requirements, usage instructions and detailed test conditions can be looked up in [Details about Approvals](#)

SCHURTER products are designed for use in industrial environments. They have approvals from independent testing bodies according to national and international standards. Products with specific characteristics and requirements such as required in the automotive sector according to IATF 16949, medical technology according to ISO 13485 or in the aerospace industry can be offered exclusively with customer-specific, individual agreements by SCHURTER.

Approvals







The approval mark is used by the testing authorities to certify compliance with the safety requirements placed on electronic products.

Approval Reference Type: 5180

Approval Logo	Certificates	Certification Body	Description
	VDE Approvals	VDE	Certificate Number: 40060906
	UL Approvals	UL	UR File Number: Pending
	CQC Approvals	CQC	CQC Certificate Number: CQC25001478280



Product standards

Product standards that are referenced

Organization	Design	Standard	Description
	Designed according to	IEC 60320-1	Appliance couplers for household and similar general purposes
	Designed according to	IEC 60939	Passive filters for suppressing electromagnetic interference
	Designed according to	UL 498	Standard for Attachment Plugs and Receptacles
	Designed according to	UL 60939-3	Passive filters for suppressing electromagnetic interference
	Designed according to	CSA C22.2 no. 42	General Use Receptacles, Attachment Plugs, and Similar Wiring Devices
	Designed according to	CSA C22.2 no. 8	Electromagnetic interference (EMI) filters









Application standards

Application standards where the product can be used

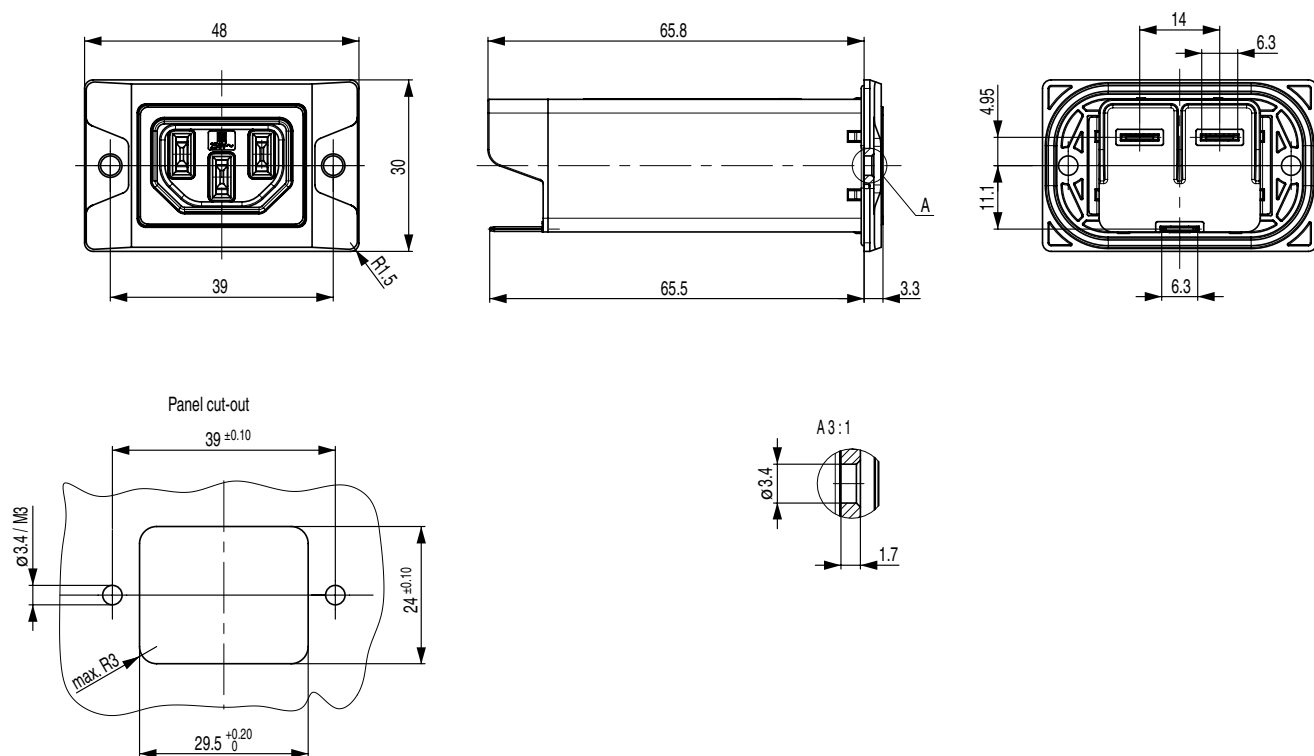
Organization	Design	Standard	Description
	Suitable for applications acc.	IEC/UL 62368-1	Audio/video, information and communication technology equipment - Part 1: Safety requirements
	Suitable for applications acc.	IEC 60601-1	Medical electrical equipment - Part 1: General requirements for basic safety and essential performance

Compliances

The product complies with following Guide Lines

Identification	Details	Initiator	Description
	CE declaration of conformity	SCHURTER AG	The CE marking declares that the product complies with the applicable requirements laid down in the harmonisation of Community legislation on its affixing in accordance with EU Regulation 765/2008.
	UKCA declaration of conformity	SCHURTER AG	The UKCA marking declares that the product complies with the applicable requirements laid down in the British Amendment of Regulation (EC) 765/2008.
	RoHS	SCHURTER AG	Directive RoHS 2011/65/EU, Amendment (EU) 2015/863
	China RoHS	SCHURTER AG	The law SJ / T 11363-2006 (China RoHS) has been in force since 1 March 2007. It is similar to the EU directive RoHS.
	REACH	SCHURTER AG	On 1 June 2007, Regulation (EC) No 1907/2006 on the Registration, Evaluation, Authorization and Restriction of Chemicals 1 (abbreviated as "REACH") entered into force.
		SCHURTER AG	V-Lock system are based on a matching plug-dose combination. The connector is equipped with a notch intended for use with the latching cordset. The cord latching system prevents against accidental removal of the cordset.
	Medical Equipment	SCHURTER AG	Suitable for use in medical equipment according to IEC/UL 60601-1 (1 MOOP, 1 MOPP)
		SCHURTER AG	Green Line products are aligned with the UN's Strategic Development Goals (SDGs). Components of the products are made of sustainable, environmentally friendly materials. These include, for example, bio-based plastics or lead-free metal alloys. Products in this line can also support the economical, intelligent use of resources.

Dimensions [mm]

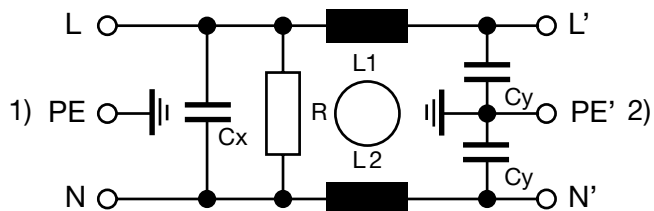


Technical Data of Filter-Components

Rated Current [A]	Filter-Type	Inductances L [mH]	Capacitance CX [nF]	Capacitance CY [nF]	R [MΩ]
1	Standard version	12	220	2.2	1
2	Standard version	5.2	220	2.2	1
3	Standard version	4	220	2.2	1
4	Standard version	2	220	2.2	1
6	Standard version	0.8	220	2.2	1
8	Standard version	0.6	220	2.2	1
10	Standard version	0.4	220	2.2	1
15	Standard version	0.1	220	2.2	1
1	Medical Version (M5)	12	220	-	1
2	Medical Version (M5)	5.2	220	-	1
3	Medical Version (M5)	4	220	-	1
4	Medical Version (M5)	2	220	-	1
6	Medical Version (M5)	0.8	220	-	1
8	Medical Version (M5)	0.6	220	-	1
10	Medical Version (M5)	0.4	220	-	1
15	Medical Version (M5)	0.1	220	-	1
1	Medical Version (M80)	12	220	0.47	1
2	Medical Version (M80)	5.2	220	0.47	1
3	Medical Version (M80)	4	220	0.47	1
4	Medical Version (M80)	2	220	0.47	1
6	Medical Version (M80)	0.8	220	0.47	1
8	Medical Version (M80)	0.6	220	0.47	1
10	Medical Version (M80)	0.4	220	0.47	1
15	Medical Version (M80)	0.1	220	0.47	1

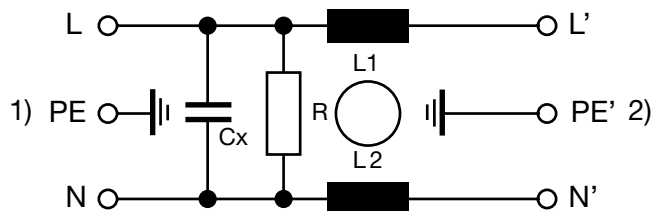
Diagrams

Standard version / Medical version M80



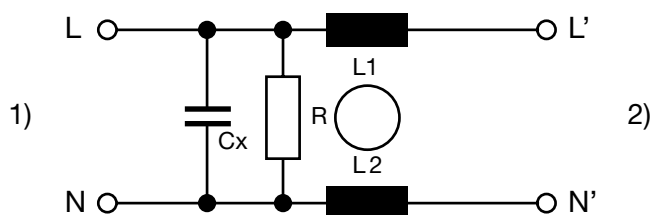
1) Line
2) Load

Medical Version (M5)



1) Line
2) Load

Medicalversion (M5), Protection Class II



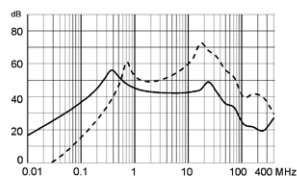
1) Line
2) Load

Attenuation Loss

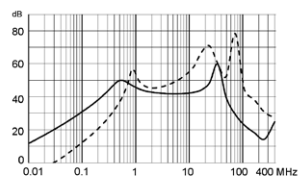
- - - 50Ω differential mode ____ 50Ω common mode

Standard version

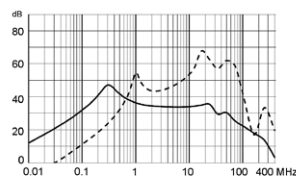
1 A



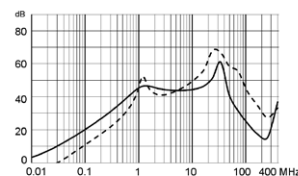
2 A



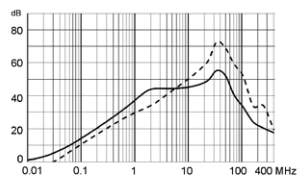
3 A



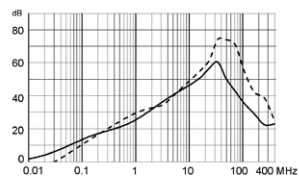
4 A



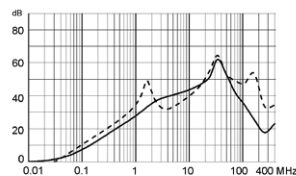
6 A



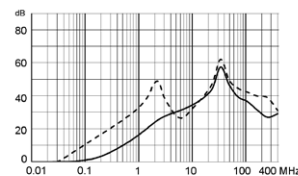
8 A



10 A

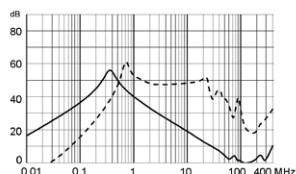


15 A

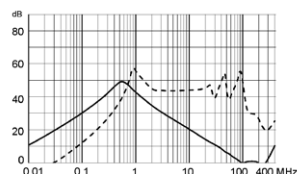


Medical version (M5)

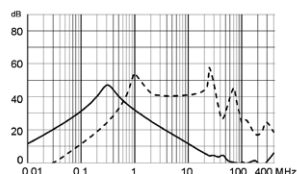
1 A



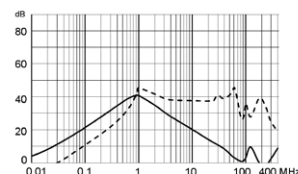
2 A



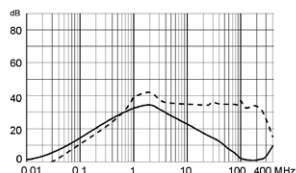
3 A



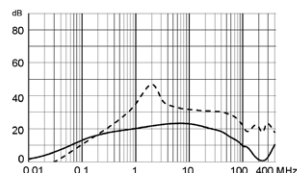
4 A



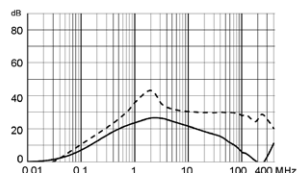
6 A



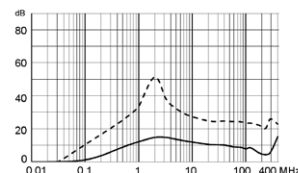
8 A



10 A

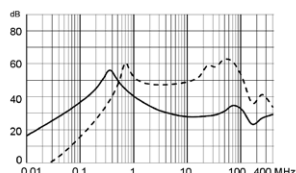


15 A

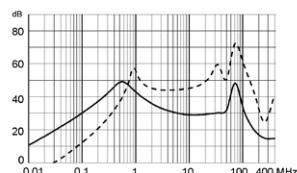


Medical version (M80)

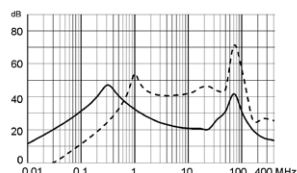
1 A



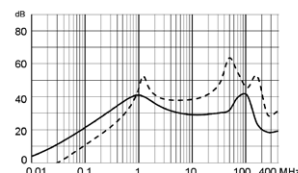
2 A



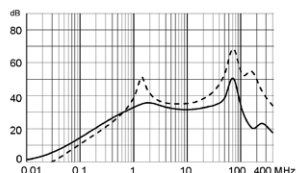
3 A



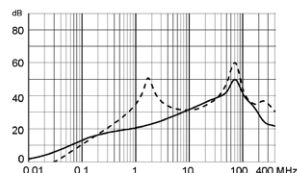
4 A



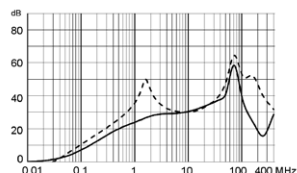
6 A



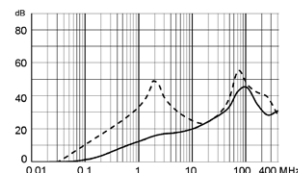
8 A




10 A




15 A



Variants

Rated Current [A]	Filter-Type	Color		Ingress Protection	Protection Class	Config. Code	Order Number
1	Standard version	black		With sealing IP54 / IP67	I	5180-12111-111-000-00-00	3-152-003
2	Standard version	black		With sealing IP54 / IP67	I	5180-12112-111-000-00-00	3-152-001
3	Standard version	black		With sealing IP54 / IP67	I	5180-12113-111-000-00-00	3-151-999
4	Standard version	black		With sealing IP54 / IP67	I	5180-12114-111-000-00-00	3-151-997
6	Standard version	black		With sealing IP54 / IP67	I	5180-12115-111-000-00-00	3-151-995
8	Standard version	black		With sealing IP54 / IP67	I	5180-12116-111-000-00-00	3-151-959
10	Standard version	black		With sealing IP54 / IP67	I	5180-12117-111-000-00-00	3-151-935
15	Standard version	black		With sealing IP54 / IP67	I	5180-12118-111-000-00-00	3-151-949
1	Medical Version (M5)	black		With sealing IP54 / IP67	I	5180-10111-111-000-00-00	3-152-086
2	Medical Version (M5)	black		With sealing IP54 / IP67	I	5180-10112-111-000-00-00	3-152-089
3	Medical Version (M5)	black		With sealing IP54 / IP67	I	5180-10113-111-000-00-00	3-152-090
4	Medical Version (M5)	black		With sealing IP54 / IP67	I	5180-10114-111-000-00-00	3-152-091
6	Medical Version (M5)	black		With sealing IP54 / IP67	I	5180-10115-111-000-00-00	3-152-093
8	Medical Version (M5)	black		With sealing IP54 / IP67	I	5180-10116-111-000-00-00	3-152-094
10	Medical Version (M5)	black		With sealing IP54 / IP67	I	5180-10117-111-000-00-00	3-152-127
15	Medical Version (M5)	black		With sealing IP54 / IP67	I	5180-10118-111-000-00-00	3-152-128
1	Medical Version (M80)	white		With sealing IP54 / IP67	I	5180-14111-111-000-10-00	3-154-403

Rated Current [A]	Filter-Type	Color		Ingress Protection	Protection Class	Config. Code	Order Number
2	Medical Version (M80)	white		With sealing IP54 / IP67	I	5180-14112-111-000-10-00	3-154-405
3	Medical Version (M80)	white		With sealing IP54 / IP67	I	5180-14113-111-000-10-00	3-154-407
4	Medical Version (M80)	white		With sealing IP54 / IP67	I	5180-14114-111-000-10-00	3-154-411
6	Medical Version (M80)	white		With sealing IP54 / IP67	I	5180-14115-111-000-10-00	3-154-413
8	Medical Version (M80)	white		With sealing IP54 / IP67	I	5180-14116-111-000-10-00	3-154-415
15	Medical Version (M80)	white		With sealing IP54 / IP67	I	5180-14118-111-000-10-00	3-154-417
10	Medical Version (M80)	black	●	With sealing IP54 / IP67	I	5180-14137-111-111-01-00	3-154-114

Availability for all products can be searched real-time: <https://www.schurter.com/en/info-center/support-tools/stock-check-distributors>

- 15 A version only according UL/CSA

Packaging unit	10 Pcs
----------------	--------

Mating Outlets/Connectors shuttered

Category / Description



[Power Cord Overview complete](#)

SC54C13KS, Overview, V-Lock cord retaining, diverse Connector IEC C13, diverse, black	SC54C13KS
---	-----------